



Whilst every effort is made to give a fair description, the accuracy of these particulars is not guaranteed, neither do they constitute an offer or contract.

MATHESONS ESTATE AGENTS have not tested any apparatus, equipment, fitting or services and so cannot verify that they are in working order. The buyer is advised to obtain verification from their solicitor or surveyor. Measurements are correct to within +/- 6 A sonic tape is used. None of the statements contained in these particulars or any of our properties are to be relied upon as a representation of fact.

166 Manor Park Road
Harlesden
London
NW10 4JT
T: 020 8965 2250
E: sales@mathesonsestates.com
www.mathesonsestates.com

**mathesons**
INDEPENDENT ESTATE AGENTS

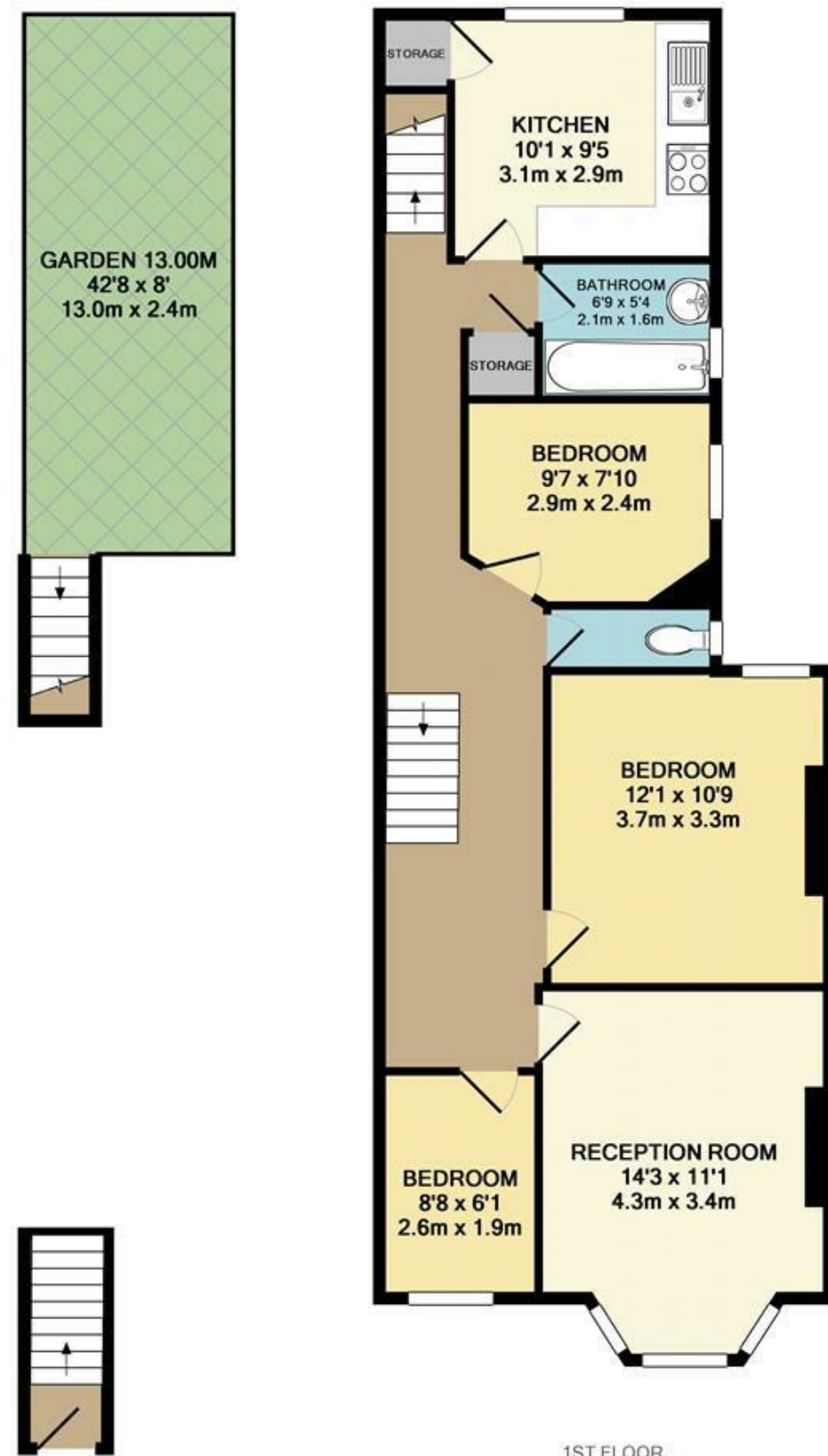
Hillside, London, NW10 8LJ Asking Price £379,950 Leasehold



KEY FEATURES:

- 3 BEDROOM PURPOSE BUILT MAISONETTE
- Separate reception
- Three good size bedrooms
- Fitted kitchen diner
- Tiled bathroom
- Separate WC
- Shared rear garden
- LEASEHOLD

A spacious first floor three bedroom Victorian Purpose Built maisonette. Benefits include separate reception, three good size bedrooms, fitted kitchen diner with door to shared rear garden, tiled bathroom with separate wc. Located close to local schools, shopping facilities, amenities, transport links at Harlesden station (Bakerloo Line, London Overground) while motorists can gain easy access into London via the A406/A40.



GROUND FLOOR
APPROX. FLOOR
AREA 43 SQ.FT.
(4.0 SQ.M.)

1ST FLOOR
APPROX. FLOOR
AREA 735 SQ.FT.
(68.2 SQ.M.)
TOTAL APPROX. FLOOR AREA 778 SQ.FT. (72.3 SQ.M.)

Whilst every attempt has been made to ensure the accuracy of the floor plan contained here, measurements of doors, windows, rooms and any other items are approximate and no responsibility is taken for any error, omission, or mis-statement. This plan is for illustrative purposes only and should be used as such by any prospective purchaser. The services, systems and appliances shown have not been tested and no guarantee as to their operability or efficiency can be given.
Made with Metropix ©2016

